

STAY SAFE AROUND DOGS AT THE PARK

PROTECT YOUR DOG



PROTECT YOUR KIDS

★ MAKE SURE YOUR DOG'S COLLAR CAN'T COME OFF

IF YOU KNOW YOUR DOG WILL BARK/GROWL AT OTHERS AT THE PARK:

- * HAVE THEM WEAR A WELL-FITTING HARNESS
- * ASK YOURSELF - IS THE PARK IS THE RIGHT PLACE FOR YOUR DOG?

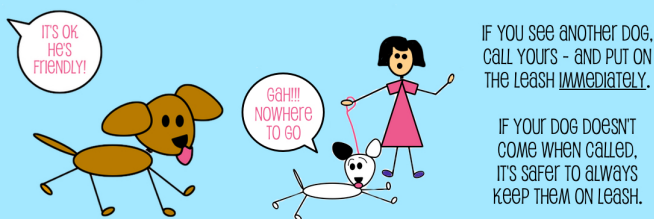


★ GIVE OTHER DOGS AND PEOPLE PLENTY OF SPACE



★ DON'T LET YOUR DOG TO RUN UP ON OTHER DOGS

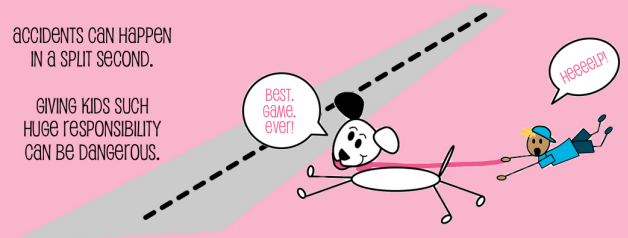
(MOST DON'T LIKE IT... EVEN IF YOUR DOG IS FRIENDLY!)



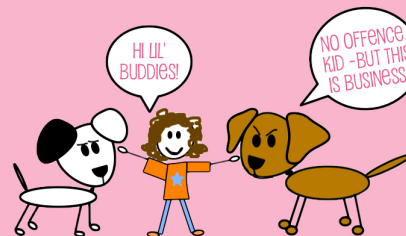
★ ONLY ADULTS & KIDS 14+ SHOULD WALK DOGS ALONE

ACCIDENTS CAN HAPPEN IN A SPLIT SECOND.

GIVING KIDS SUCH HUGE RESPONSIBILITY CAN BE DANGEROUS.



★ KEEP KIDS OUT OF DOGGIE GREETINGS



DOGGIE GREETINGS CAN BE UNPREDICTABLE. ALWAYS ALLOW DOGS CHOICE, SPACE AND A LOOSE LEASH.

ALLOWING KIDS TO GET IN THE MIDDLE OF THE ACTION IS VERY RISKY.

★ TEACH YOUR KIDS TO ASK THE DOG BEFORE PETTING

PAT

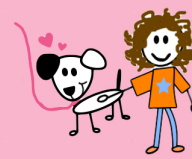
YOUR LEG TO INVITE THE DOG.



DOG APPROACHES = OK TO PET
NO APPROACH = LEAVE THE DOG BE

PET

DOG ON THE BODY (NOT THE HEAD).



KEEP KID FACES AWAY FROM DOGGIE FACES

PAUSE

THE PETTING AFTER 3 SECONDS. DOES THE DOG ASK FOR MORE?



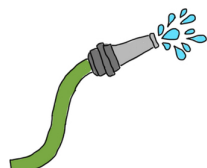
DOG STAYS = MORE PETTING
DOG WALKS AWAY = ALL DONE!

IF A DOG FIGHT BREAKS OUT

always
KEEP HANDS OUT



SPRAY WATER



or

COVER DOG WITH COAT/BLANKET



or

USE A CITRONELLA SPRAY

